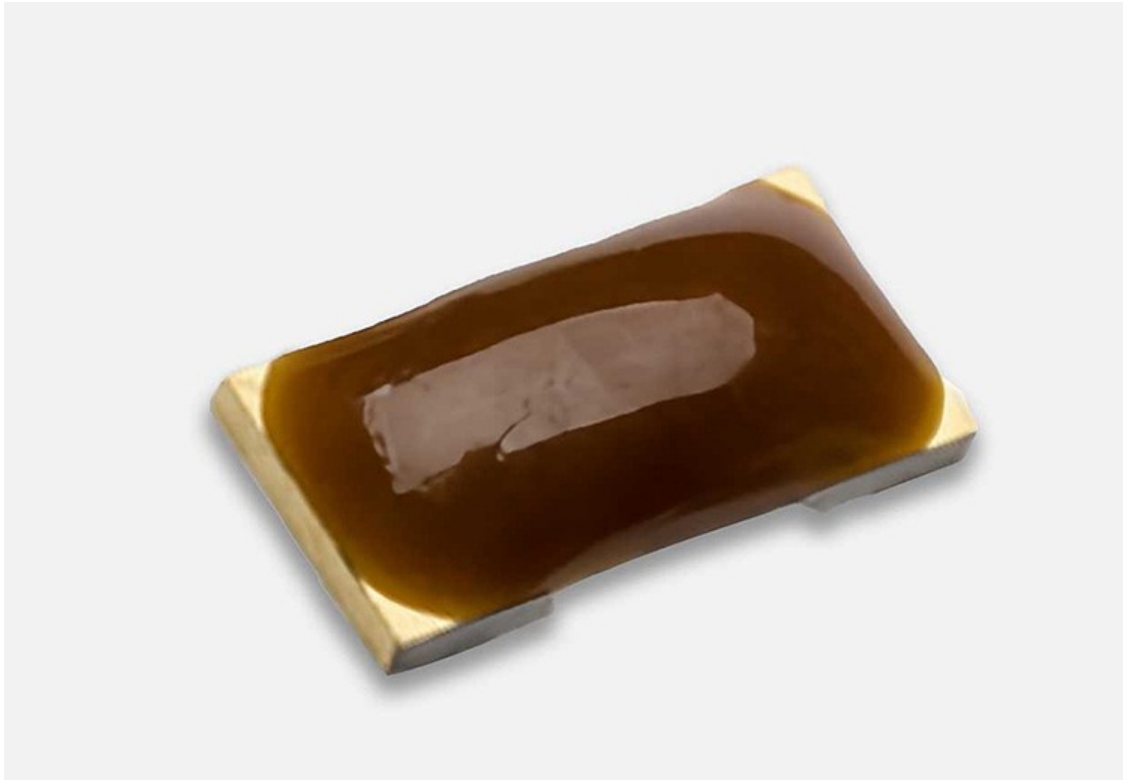


kD100 Noise Diodes

10 Hz to 10 Ghz



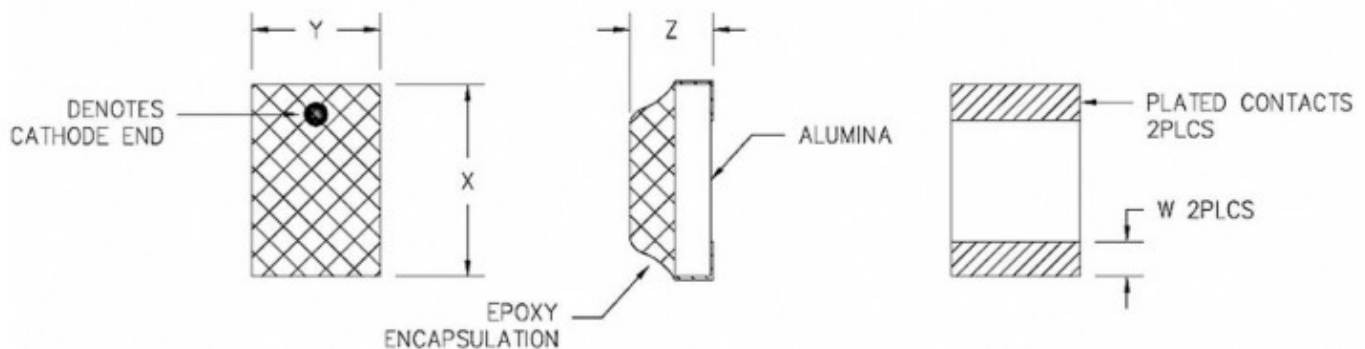
kTB Noise Diodes

kTB'S noise diodes are the fundamental building blocks of all noise systems. They are hand-picked for performance characteristics that make them ideally suited to broadband noise generation with flat response.

All KTB noise diodes deliver symmetrical white Gaussian noise and flat output power versus frequency. The diodes are hermetically sealed and available in a wide variety of package styles. Special package configurations or screening processes are available upon request.

Model	Frequency Range	Operating Voltage (v)	ENR (dB)	Impedance (ohm)	Bias (mA)
KD100	10Hz to 10GHz	6-10V	30	50	8mA (typical)

KD100



DIMENSIONS (MILS)					DIMENSIONS (MILLIMETERS)				
W	X	Y	Z		W	X	Y	Z	
			MAX	NOM				MAX	NOM
11±3	62±3	42±3	50	35	0.279±0.076	1.575±0.076	1.067±0.076	1.270	0.889

Features

- Custom electrical testing available upon request.
- Wide package variety with custom configurations.
- Can deliver symmetrical white Gaussian noise and flat output power versus frequency.
- Be used for RF and Microwave application
- EMI testing
- Classified based on performance traits that improve their broadband noise output and produce a flat spectral response.