

NPD4-13750-14500

4-Way, 13.75~14.5GHz

Features:

- * Small Size
- * Low Insertion Loss

Applications:

- * Amplifiers
- * Mixers
- * Antennas
- * Laboratory Test

Electrical

Frequency:	13.75~14.5GHz
Insertion Loss:	1.0dB max.
Input VSWR:	1.4 max.
Output VSWR:	1.3 max.
Isolation:	18dB min.
Amplitude Balance:	0.4dB max.
Phase Balance:	±5°
Impedance:	50Ω
Average Power:	20W max. 1W max. as combiner

Mechanical

Mounting:	4-Φ2.8mm through-hole (SMA)
Mounting:	4-Φ3.2mm through-hole (N)

Environmental

Operation Temperature:	-45~+85°C
------------------------	-----------

How To Order

NPD4-13750-14500-X-Y

X: Average power as divider

Y: Connector type

Connector naming rules:

S - SMA Female (Outline A)

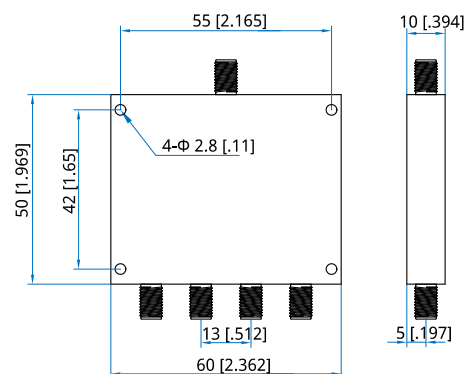
N - N Female (Outline B)

Examples:

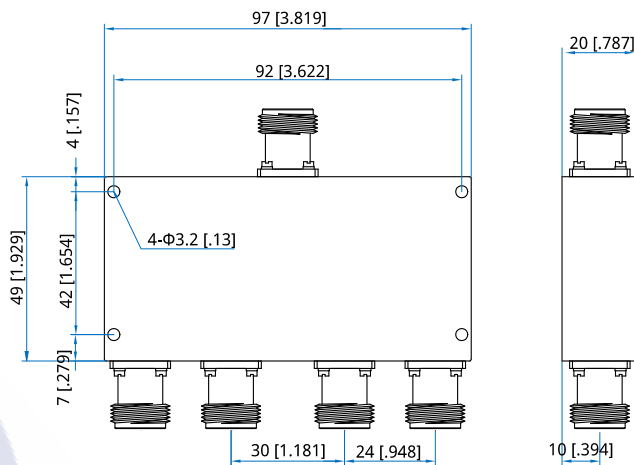
To order a 4-way power divider, 13.75~14.5GHz, 20W, N female, specify NPD4-13750-14500-20-N.

Customization is available upon request.

Outline Drawings



Outline A



Outline B

Unit: mm [in]

Tolerance: ±0.5mm [±0.02in]