

NPD4-800-2500-K2

4-Way, 0.8~2.5GHz, 200W

Features:

- * Small Size
- * Low Insertion Loss

Applications:

- * Amplifiers
- * Mixers
- * Antennas
- * Laboratory Test

Electrical

Frequency:	0.8~2.5GHz
Insertion Loss:	0.8dB max.
Input VSWR:	1.3 max.
Output VSWR:	1.2 max.
Isolation:	20dB min.
Amplitude Balance:	0.3dB max.
Phase Balance:	4° max.
Impedance:	50Ω
Average Power:	200W

Mechanical

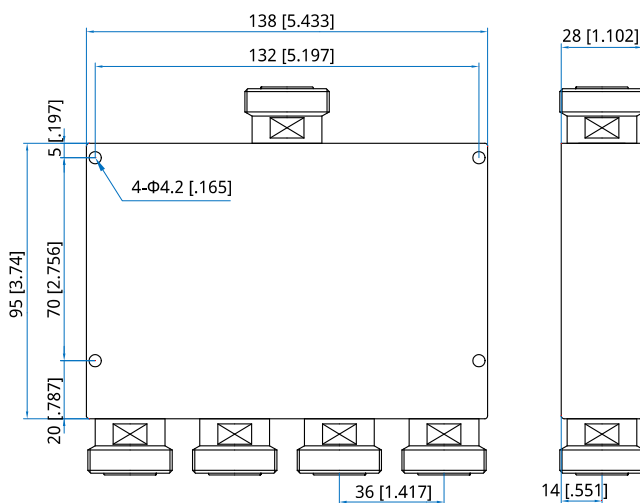
Size*1:	95*138*28mm 3.745.433*1.102in
Connectors:	7/16 DIN Female
Mounting:	4-Φ4.2mm through-hole

[1] Exclude connectors.

Environmental

Operation Temperature:	-30~+70°C
------------------------	-----------

Outline Drawings



Unit: mm [in]

Tolerance: ±0.5mm [±0.02in]

How To Order

NPD4-800-2500-K2

Customization is available upon request.