

NCM-FB-086-1

MCX Female

Features:
* Low VSWR

Applications:
* Wireless
* Radar
* Instruments
* Electronics

Electrical

Frequency:	DC~6GHz
VSWR:	1.2 max.
Impedance of Dielectric:	1000MΩ min.
Voltage Withstand:	750V DC min
Impedance:	50Ω

Mechanical

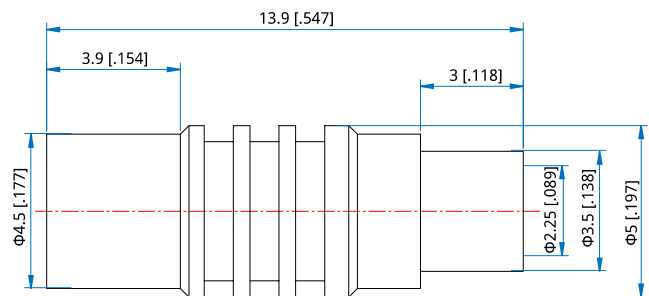
RF Connector:	MCX Female
Mating Cable:	NH280, ND086, NE086, RG316, RG316D
Outer Conductor:	Gold plated brass
Dielectric:	PTFE
Inner Conductor:	Gold plated phosphor copper

How To Order

NCM-FB-086-1

Customization is available upon request.

Outline Drawings



Unit: mm [in]

Tolerance: $\pm 0.2\text{mm}$ [$\pm 0.008\text{in}$]