

NCS-FL2B-141-1

SMA Female, 2-Hole Flange Mount

Features:
* Low VSWR

Applications:
* Wireless
* Radar
* Instruments
* Electronics

Electrical

Frequency: DC~18GHz
VSWR: 1.25 max.
Impedance: 50Ω

Mechanical

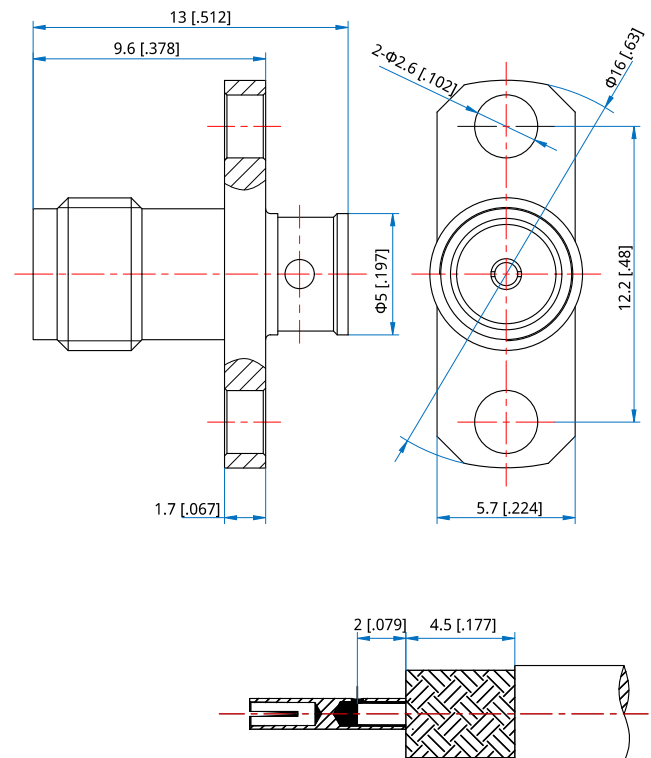
RF Connector: SMA Female
Mating Cable: NH400, ND141, NE141
Outer Conductor: Brass

How To Order

NCS-FL2B-141-1

Customization is available upon request.

Outline Drawings



Unit: mm [in]

Tolerance: ±0.2mm [±0.008in]