

## NCS-FG-G360-1

### SMA Female

Features:  
\* Low VSWR

Applications:  
\* Wireless  
\* Radar  
\* Instruments  
\* Electronics

#### Electrical

Frequency: DC~18GHz  
VSWR: 1.3 max.  
Impedance: 50Ω

#### Mechanical

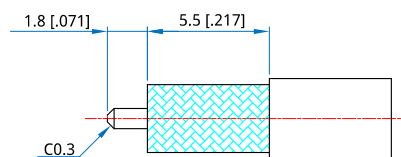
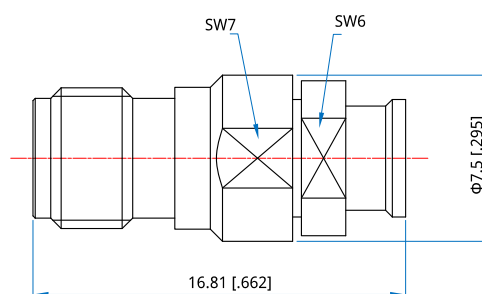
RF Connector: SMA Female  
Mating Cable: NG360  
Outer Conductor: Passivated stainless steel  
Inner Conductor: Gold plated beryllium copper

#### How To Order

**NCS-FG-G360-1**

Customization is available upon request.

#### Outline Drawings



Unit: mm [in]

Tolerance: ±0.2mm [±0.008in]