

## NCP-FB-A360-3

### SMP Female

Features:  
\* Low VSWR

Applications:  
\* Wireless  
\* Radar  
\* Instruments  
\* Electronics

#### Electrical

Frequency:	DC~40GHz
VSWR:	1.4 max.
Impedance of Dielectric:	5000MΩ min.
Voltage Withstand:	500V DC min.
Impedance:	50Ω

#### Mechanical

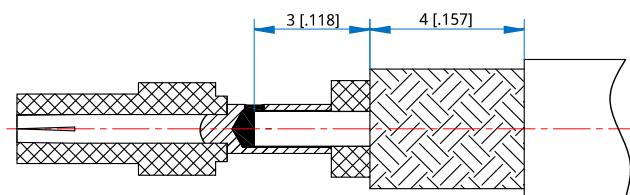
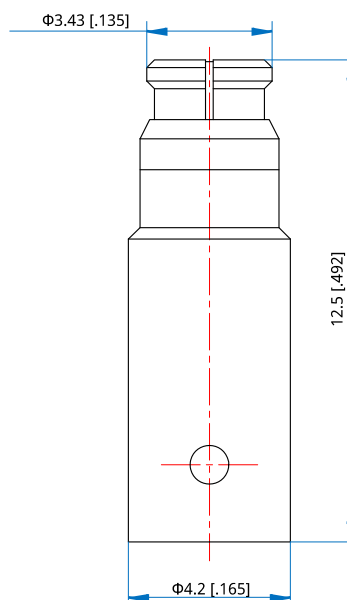
RF Connector:	SMP Female
Mating Cable:	NA360
Outer Conductor:	Beryllium copper

#### How To Order

**NCP-FB-A360-3**

Customization is available upon request.

#### Outline Drawings



Unit: mm [in]

Tolerance: ±0.2mm [±0.008in]