

## NCA-MG-086-2

### SSMA Male

Features:  
\* Low VSWR

Applications:  
\* Wireless  
\* Radar  
\* Instruments  
\* Electronics



#### Electrical

Frequency:	DC ~ 26.5GHz
VSWR:	1.25 max.
Impedance of Dielectric:	5000MΩ min.
Voltage Withstand:	500V DC min.
Impedance:	50Ω

#### Mechanical

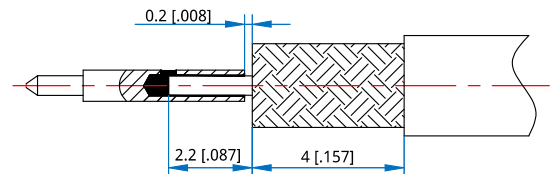
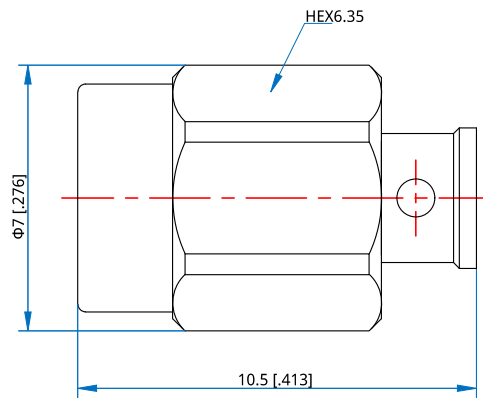
RF Connector:	SSMA Male
Mating Cable:	NH280, ND086, NE086, RG316, RG316D
Outer Conductor:	Stainless steel

#### How To Order

#### NCA-MG-086-2

Customization is available upon request.

#### Outline Drawings



Unit: mm [in]

Tolerance: ±0.2mm [±0.008in]