

NSP44

4.3-10 to 4.3-10

Features:
* Broadband

Applications:
* Any Applications

Electrical

Frequency:	DC~3GHz
VSWR:	1.2 max.
RF Power Transmission:	400W
Dielectric Withstanding Voltage:	2500V RMS, 50Hz, at sea level, min.
Working Voltage (DC):	230V*1
Lightning Surge Current:	10kA
Ground Wire Diameter:	4 mm ² max.
Impedance of Dielectric:	5000MΩ min.
Impedance of Contact (Center):	1mΩ max.
Impedance of Contact (Outer):	1mΩ max.
Impedance:	50Ω

[1] Default 230V, available for 90V, 150V, 350V and 600V.

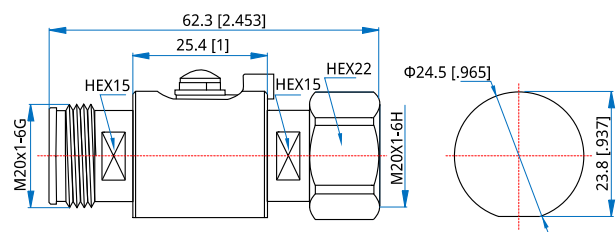
Mechanical

RF Connector:	4.3-10
Mating Life Cycle:	500 cycles min.
Outer Conductor:	Nickel plated brass
Dielectric:	PTFE
Inner Conductor:	Gold plated brass

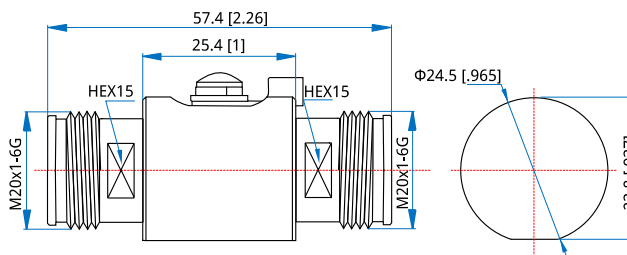
Environmental

Temperature:	-45~+125°C
--------------	------------

Outline Drawings



Outline A



Outline B

Unit: mm [in]

Tolerance: ±0.2mm [±0.008in]

How To Order

NSP44-MF-03 - 4.3-10(m) to 4.3-10(f), DC~3GHz, Outline A

NSP44-FF-03 - 4.3-10(f) to 4.3-10(f), DC~3GHz, Outline B

Customization is available upon request.