

## NCP-MB-086-1

### SMP Male

Features:  
\* Low VSWR

Applications:  
\* Wireless  
\* Radar  
\* Instruments  
\* Electronics

#### Electrical

Frequency: DC~40GHz  
VSWR: 1.4 max.

#### Mechanical

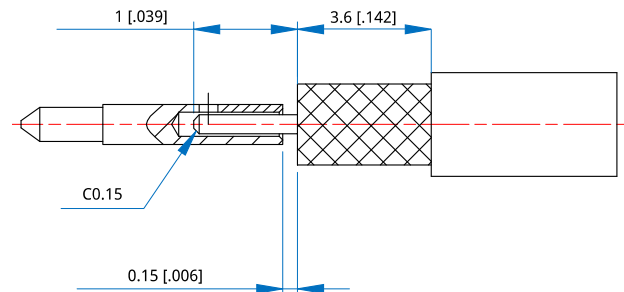
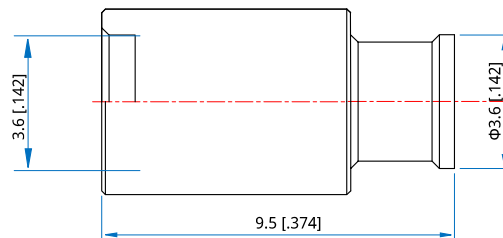
RF Connector: SMP male  
Mating Cable: NA220  
Outer Conductor: Gold plated Phosphor copper

#### How To Order

**NCP-MB-086-1**

Customization is available upon request.

#### Outline Drawings



Unit: mm [in]

Tolerance:  $\pm 0.2\text{mm}$  [ $\pm 0.008\text{in}$ ]