

NCPF-MB-M46

SMP Connector, DC~18GHz

Features:
* Low VSWR

Applications:
* Wireless
* Radar
* Instruments
* Electronics

Electrical

Frequency:	DC~18GHz
Impedance of Dielectric:	5000MΩ min.
Voltage Withstand:	500V DC
Impedance:	50Ω

Mechanical

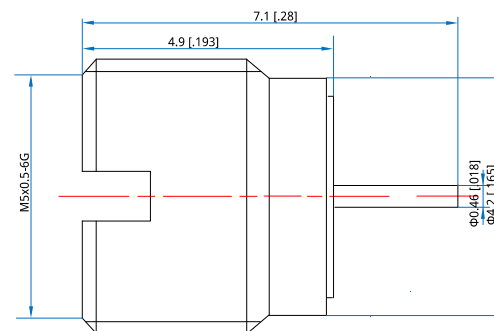
RF Connector:	SMP male
Outer Conductor:	Gold ¹ plated beryllium copper
Dielectric:	PTFE
Inner Conductor:	Passivated 316L Stainless Steel
Mold Prevention:	28 h
Salt Fog Prevention:	96 h
Other:	waterproof

[1]Gold1.27

Environmental

Temperature:	-55~+125°C
--------------	------------

Outline Drawings



Unit: mm [in]

Tolerance: ±0.2mm [±0.008in]

How To Order

NCPF-MB-M46-01

Customization is available upon request.