

## NCPS-MRB-D30-01

### SMP Connector, DC~30GHz

Features:  
\* Low VSWR

Applications:  
\* Wireless  
\* Radar  
\* Instruments  
\* Electronics

#### Electrical

Frequency:	DC~30GHz
VSWR:	1.6 max.
Impedance of Dielectric:	5000MΩ min.
Voltage Withstand:	500V
Salt Fog:	48h
Impedance:	50Ω

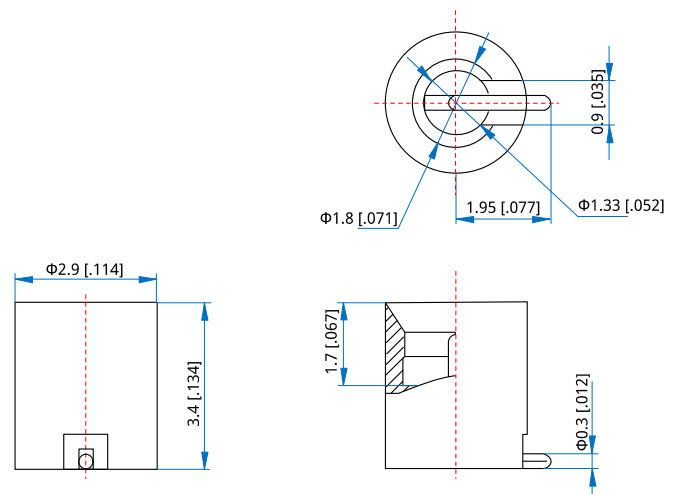
#### Mechanical

RF Connector:	SMP male
Detent mode:	Smooth Bore
Mating Life Cycle:	500 cycles
Outer Conductor:	Gold plated brass
Dielectric:	PEEK
Inner Conductor:	Gold plated beryllium copper

#### Environmental

Temperature:	-55~+125°C
--------------	------------

#### Outline Drawings



Unit: mm [in]  
Tolerance: ±0.2mm [±0.008in]

#### How To Order

#### NCPS-MRB-D30-01

Customization is available upon request.