

NCPF-ML2G-M38

SMP Connector, DC~40GHz

Features:
* Low VSWR

Applications:
* Wireless
* Radar
* Instruments
* Electronics

Electrical

Frequency:	DC~40GHz
VSWR:	1.3 max.
Impedance of Dielectric:	5000MΩ min.
Impedance of Inner Conductor:	6mΩ max.
Impedance of Outer Conductor:	2mΩ max.
Voltage Withstand:	335V DC
Impedance:	50Ω

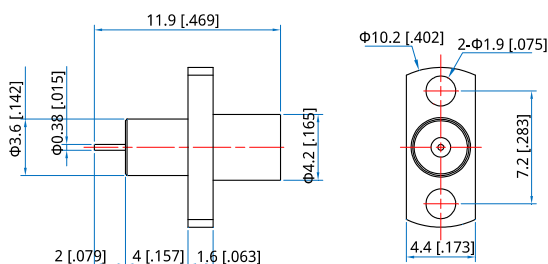
Mechanical

RF Connector:	SMP male
Detent mode:	Full Detent
Outer Conductor:	Passivated SUS303 stainless steel
Dielectric:	PEI & PTFE or PEI
Inner Conductor:	Gold plated kovar material or gold plated beryllium copper

Environmental

Temperature:	-55~+165°C
--------------	------------

Outline Drawings



Outline A

Unit: mm [in]

Tolerance: ±0.2mm [±0.008in]

How To Order

NCPF-ML2G-M38-01 - Outline A

Customization is available upon request.