

## NPS2-100-4000-A

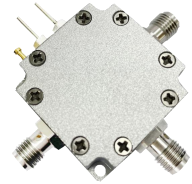
SPDT, 0.1~4GHz, Absorptive

### Features:

- \* Low Insertion Loss
- \* High Isolation

### Applications:

- \* Wireless
- \* Transmitter
- \* Laboratory Test
- \* Radar



### Electrical

Frequency:	0.1~4GHz
On/Off Delay:	100nS max.
Supply Voltage:	+5±0.5V
Current:	50mA typ.
Control:	TTL High - 1
	TTL Low/NC - 0

Frequency range (GHz)	Insertion Loss (dB)	Isolation (dB)	VSWR (On state)
0.1~1	1.4	40	1.8
1~3.5	1.4	40	1.2
3.5~4	1.8	35	1.2

### Absolute Maximum Ratings

RF Input Power:	+26dBm
Control Voltage Range:	-0.5~+7V DC
Hot Switch Power:	+18dBm

### Mechanical

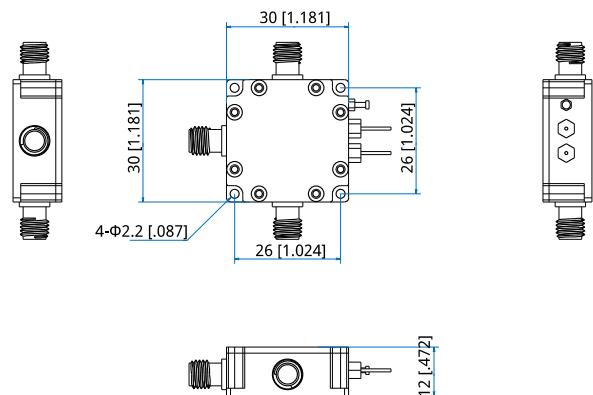
Size*1:	30*30*12mm 1.181*1.181*0.472in
RF Connectors:	SMA Female
Power Supply Connectors:	Feed Through/Terminal Post
Mounting:	4-Φ2.2mm through-hole

[1] Exclude connectors.

### Environmental

Operating Temperature:	-40~+85°C
Non-operating Temperature:	-65~+150°C

### Outline Drawings



Unit: mm [in]

Tolerance: ±0.2mm [±0.008in]

### Control True Table

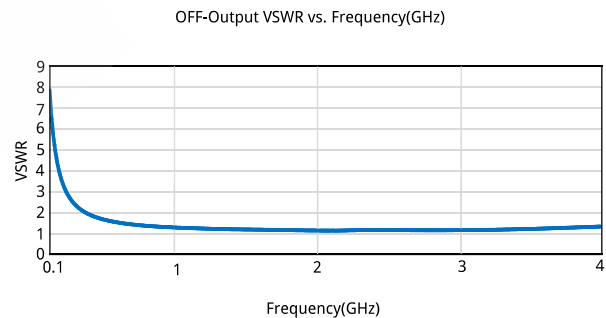
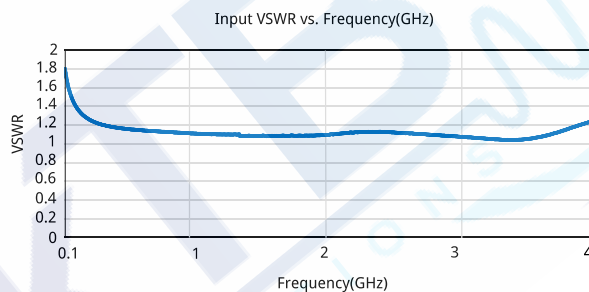
Control	Connection
0	J0 - J2 On
1	J0 - J1 On

### How To Order

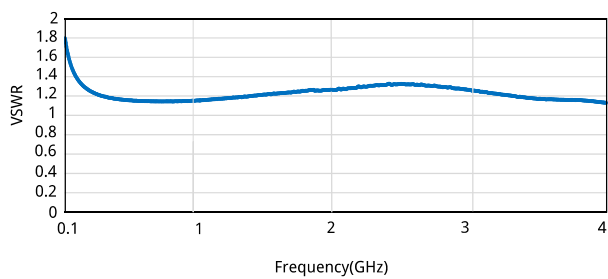
**NPS2-100-4000-A**

Customization is available upon request.

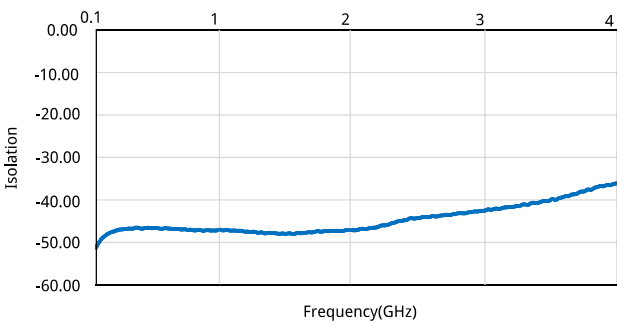
### Typical Performance Curves



ON-Output VSWR vs. Frequency(GHz)



Isolation vs. Frequency(GHz)



Insertion Loss vs. Frequency(GHz)

