

## NDC1313TB

### High Power, High Isolation

#### Features:

- \* High Power
- \* High Isolation
- \* Low Insertion Loss
- \* Low VSWR

#### Applications:

- \* Wireless
- \* Radar
- \* Laboratory Test

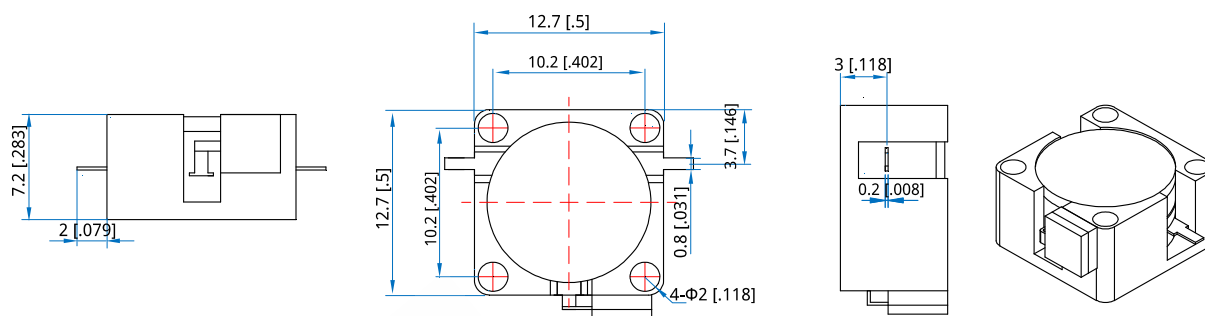
#### Description

NDC1313TB series Drop-In Circulators cover frequency range 2.11~2.17GHz. High power, high isolation and low insertion loss make it ideal for a lot of applications like amplifiers, transceivers, etc.

#### Specifications

| Frequency<br>(MHz) | Bandwidth<br>(MHz) | Insertion Loss<br>(dB Max.) | Isolation<br>(dB Min.) | VSWR<br>(Max.) | Average Power<br>(W) | Temperature<br>(°C) |
|--------------------|--------------------|-----------------------------|------------------------|----------------|----------------------|---------------------|
| 2110~2170          | 60                 | 0.30                        | 20.0                   | 1.25           | 50                   | -40~+125            |

#### Outline Drawings



Unit: mm [inch]      Tolerance: ±0.2mm [±0.008in]

#### Mechanical

Size\*1: 12.7\*12.7\*7.2mm  
0.5\*0.5\*0.283in  
Connector Type: Strip line  
Mounting: 4-Φ2mm through-hole

[1] Exclude connectors

#### Direction Naming Rules:

- 1 - Clockwise
- 2 - Anticlockwise

#### How To Order

##### NDC1313TB-W-X-Y-Z

W: Start frequency in MHz

X: Stop frequency in MHz

Y: Average Power in W

Z: Direction type

#### Examples:

To order a NDC1313TB series Circulator, 2110~2170MHz, 50W, Clockwise, specify NDC1313TB-2110-2170-50-1.

Customization is available upon request.