

## NAN7

### N to 7/16 DIN

Features:  
\* Low VSWR

Applications:  
\* Wireless  
\* Transmitter  
\* Laboratory Test  
\* Radar

#### Electrical

Frequency: DC~6GHz (Outline E)  
DC~7.5GHz  
VSWR: 1.1 max. @3GHz  
1.2 max. (Outline E)  
Impedance: 50Ω

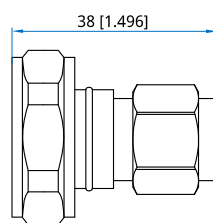
#### Mechanical

RF Connectors: N  
7/16 DIN  
Outer Conductor: Ternary alloy plated brass  
Dielectric: PTFE  
Inner Conductor: Silver plated tin phosphorus  
bronze or silver plated brass

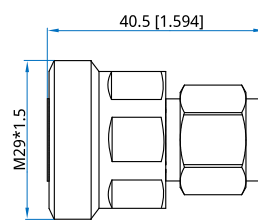
#### Environmental

Temperature: -40~+85°C  
-45~+85°C (Outline E)

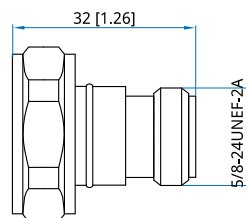
#### Outline Drawings



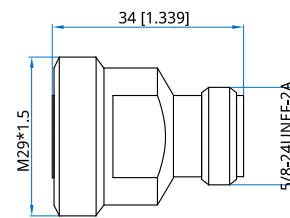
Outline A



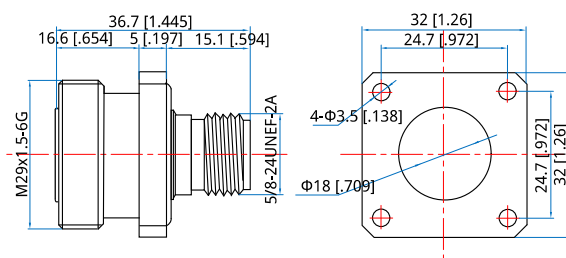
Outline B



Outline C



Outline D



Outline E

Unit: mm [in]

Tolerance: ±0.2mm [±0.008in]

#### How To Order

**NAN7-MM** - N (m) to 7/16(DIN) (m), Outline A

**NAN7-MF** - N (m) to 7/16(DIN) (f), Outline B

**NAN7-FM** - N (f) to 7/16(DIN) (m), Outline C

**NAN7-FF** - N (f) to 7/16(DIN) (f), Outline D

**NAN7L-FF** - N (f) to 7/16(DIN) (f), flange mount, Outline E

Customization is available upon request.