

NAST SMA to TNC

Features:
* Low VSWR

Applications:
* Wireless
* Transmitter
* Laboratory Test
* Radar

Electrical

Frequency:	DC~18GHz
VSWR:	1.2max.
VSWR:	1.25max. (Outline E)
VSWR:	1.3max. (Outline F)
Impedance:	50Ω

Mechanical

RF Connectors:	SMA
	TNC
Outer Conductor:	Passivated stainless steel Passivated SUS303 stainless steel. (Outline E)
Dielectric:	PEI & PTFE or PTFE
Inner Conductor:	Gold plated beryllium copper

Environmental

Temperature:	-50~+85°C
	-55~+165°C(bulk head)

How To Order

NAST-MM - SMA (m) to TNC (m), Outline A

NAST-MF - SMA (m) to TNC (f), Outline B

NAST-FM - SMA (f) to TNC (m), Outline C

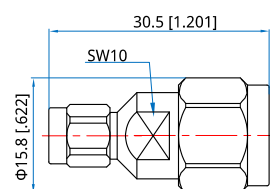
NAST-FF - SMA (f) to TNC (f), Outline D

NASTL-FF - SMA (f) to TNC (f), Flange mount, Outline E

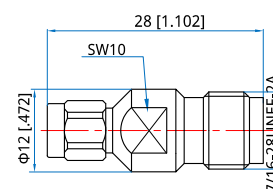
NASTH-FF - SMA (f) to TNC (f), Bulk head, Outline F

Customization is available upon request.

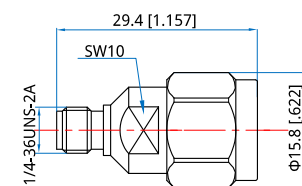
Outline Drawings



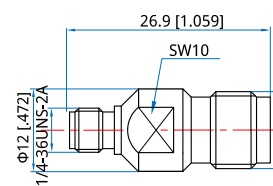
Outline A



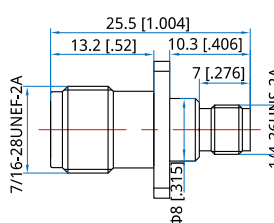
Outline B



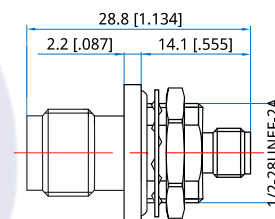
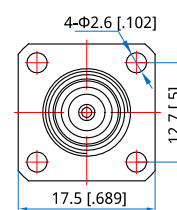
Outline C



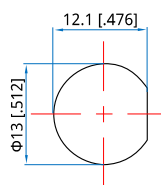
Outline D



Outline E



Outline F



Unit: mm [in]

Tolerance: ±0.2mm [±0.008in]