

NALC7

LC to 7/16 DIN (L29)

Features:
* Low VSWR

Applications:
* Wireless
* Transmitter
* Laboratory Test
* Radar

Electrical

| | |
|----------------------------------|-------------------------------|
| Frequency: | DC~4GHz |
| VSWR: | 1.2 max. |
| Dielectric Withstanding Voltage: | 3500V RMS, 50Hz, at sea level |
| Impedance of Dielectric: | 5000MΩ min. |
| Impedance of Contact (Center): | 0.4mΩ max. |
| | 1mΩ max. (Outline C) |
| Impedance of Contact (Outer): | 1mΩ max. |
| | 0.5mΩ max. (Outline C) |
| Impedance: | 50Ω |

Mechanical

| | |
|--------------------|----------------------|
| RF Connectors: | LC |
| | 7/16 DIN (L29) |
| Mating Life Cycle: | 500 cycles min. |
| ROHS Compliant: | Full ROHS compliance |
| Outer Conductor: | Nickel plated brass |
| Dielectric: | PTFE |
| Inner Conductor: | Silver plated brass |
| Connection sleeve: | Nickel plated brass |

Environmental

| | |
|--------------|------------|
| Temperature: | -45~+125°C |
|--------------|------------|

How To Order

NALC7-MM - LC (m) to 7/16 DIN (m), Outline A

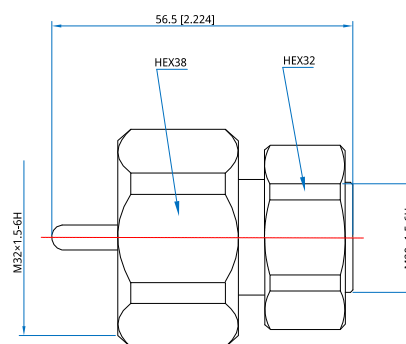
NALC7-MF - LC (m) to 7/16 DIN (f), Outline B

NALC7-FM - LC (f) to 7/16 DIN (m), Outline C

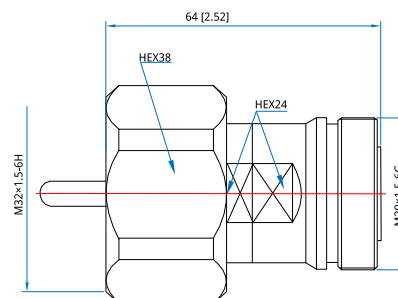
NALC7-FF - LC (f) to 7/16 DIN (f), Outline D

Customization is available upon request.

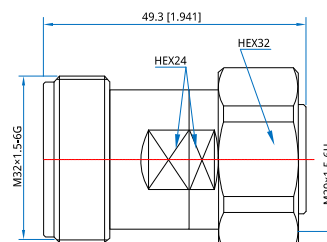
Outline Drawings



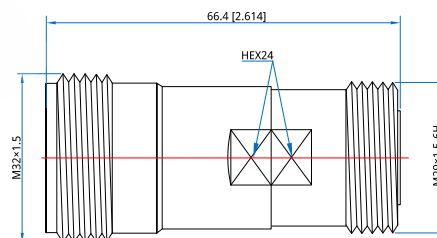
Outline A



Outline B



Outline C



Outline D

Unit: mm [in]

Tolerance: ±0.2mm [±0.008in]